



MARRRAM

Te Whānau o Marram

HOLIDAY HOME LOCATION GUIDE



MARRAM

HOLIDAY HOMES

Experience the best New Zealand has to offer with Marram holiday homes

Marram's heavily subsidised accommodation means everyone in the community can enjoy great holidays.

Whether you're after a beach break, a nature break, a city break or a romantic getaway there's a Marram holiday home that will be perfect for you.

Choose from more than 150 holiday homes in Aotearoa New Zealand's most desirable holiday destinations.

All the homes are well appointed, cleaned prior to your stay and family friendly. Many are serviced with linen supplied, and an increasing number are pet-friendly. Simply enquire when you book. All you have to worry about, is where you'll go next.

Marram Community Trust
PO Box 24006
Wellington 6142
Ph: 04 801 2920
Fax: 04 385 3558

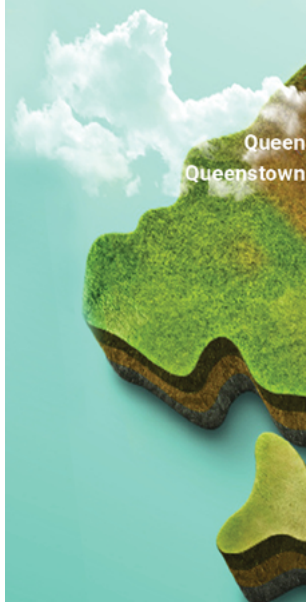
Email: support@marram.co.nz
Web: marram.co.nz
facebook.com/MarramCommunityTrust
instagram.com/marram_community_trust_nz

CONTENTS

NORTH ISLAND

Coopers Beach	4
Haruru Falls	4
Whangārei	5
Orewa	5
Auckland Central - Sandringham	6
Auckland Central - City	6
Auckland East	8
Maraetai Beach	9
Whitianga	10
Ngarimu Bay	10
Whangamatā	11
Mount Maunganui	11
Hamilton	12
Raglan	12
Ohope	13
Rotorua	13
Acacia Bay	14
Taupō	14
Tūrangi	14
New Plymouth	15
Ohakune	15
Napier	16
Hastings	16
Palmerston North	17
Greytown	18
Martinborough	18
Kāpiti Coast	19
Plimmerton	19
Wellington City	20
Wellington South	20
South Island	22


Please leave this booklet in the holiday home for all to use. Thank you.





Coopers Beach (4)

Haruru Falls (4)

Whangarei (3) 

Orewa (5) 

Auckland (8)

Auckland City (1)

Auckland East (2)

Whitianga (4)

Maraetai Beach (1) 

Ngarimu Bay (1)

Whangamata (2)

Hamilton (1)

Mt Maunganui (14)


Raglan (1)

Ohope Beach (6) 

Rotorua (8)

Acacia Bay (2) 


Taupo (5)

New Plymouth (2) 

Turangi (2)


Ohakune (3)

Napier (4)

Hastings (3) 

Palmerston North (2)

Kaiteriteri (2)

Raumati (3) 

Plimmerton (1)

Greytown (1)


Martinborough (2)


Nelson (7)

Picton (2)

Wellington City (9)

Wellington South (2) 

Kaikoura (2) 

Hanmer Springs (4) 

Hokitika (2) 

Christchurch (4)

Akaroa (2)

Lake Tekapo (2)

Wanaka (5)

Stown (1)

East (8)

Cromwell (2) 

Alexandra (2)

Dunedin (4) 



Cape Reinga

COOPERS BEACH

TROPICAL RETREAT

Seventy kilometres of unspoilt coastline in beautiful subtropical Northland. Stunning deck-side views of Doubtless Bay and some of the BEST fishing you'll find.

Marram's northern most holiday home gives you access to the golden sands of Cable Bay for swimming, and the boat ramp at Taipa.

Everything you need is no more than five minutes away. For the more adventurous, 90 Mile Beach and Cape Reinga are just a scenic drive away.

A mind and body soothing escape 'Far from the Maddening Crowds.'

TRAVEL

Four hours north of Auckland

KEY FEATURES

- Four holiday homes
- Close to beach and shops
- Decks and views facing Doubtless Bay

HARURU FALLS

MARSDEN'S REST

A chance to commune with nature and enjoy an area of outstanding beauty and historical significance in the heart of the beautiful Bay of Islands.

Take a thermos and have a cuppa sitting on the rocks above the falls like Samuel Marsden did back in 1815.

Just five minutes from Paihia, and close to the historic Waitangi Treaty Grounds, Haruru Falls has something for everyone. Diving, swimming, biking, skydiving, great walking tracks and ocean cruising.

TRAVEL

Three hours north of Auckland

KEY FEATURES

- Four holiday homes
- Close to falls park and licensed restaurant



WHANGAREI

GATHERING PLACE OF THE WHALES

A no-stress city break and so much more. When shopping, great restaurants, bars and entertainment aren't enough, Whangarei offers up plenty of extras.

Some of the best beaches in the north are less than an hours drive away and Dolphin and Whales aren't hard to find in this part of the world.

It's an area of great cultural history and significance with the beautiful Whangārei Harbour a popular way point for Maori tribes travelling north or south in waka. See their journey recreated in the Hatea Loop Heritage Trail, and the historic Pa at Parihaka is just a short trip away.

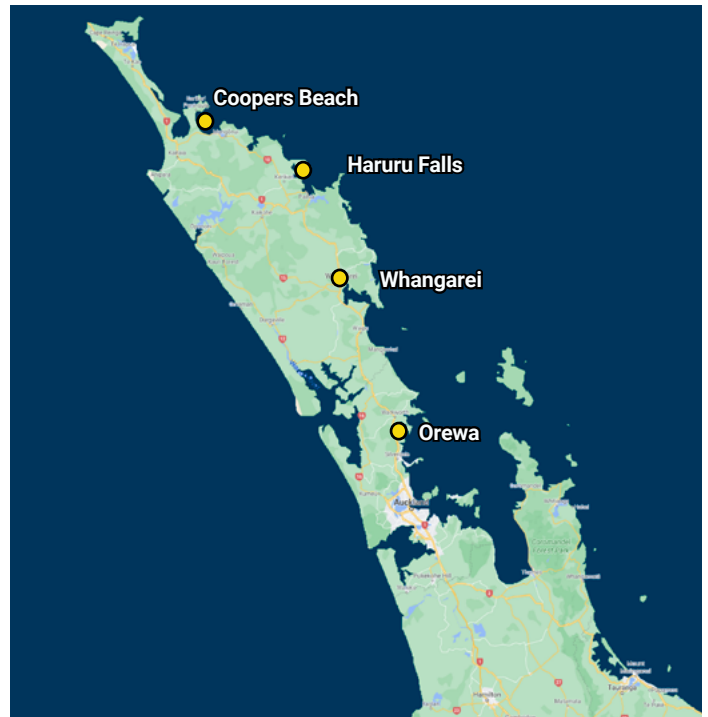
Explore the subtropical gardens, spectacular beaches and walks, along with the great coffee, food and boutique markets the city has to offer.

TRAVEL

Two hours north of Auckland

KEY FEATURES

- Three holiday homes and fully fenced section
- One pet friendly home



Whangarei town, photo: David Kirkland



Smugglers Bay Loop Track, photo: Northland NZ

OREWA

HIBISCUS HIDEAWAY

The jewel of the Hibiscus Coast at the base of the Whangaparaoa Peninsula. Three kilometres of golden sand just 25 minutes from the Auckland Harbour Bridge.

For coastal views that are hard to beat, stroll along the Millennium Walkway, but if you'd rather be in the water, this is the destination for swimming, surfing, kayaking and kite surfing. There's golf at the magnificent Gulf Harbour, wine trails, hiking, cycling and thermal hot pools.

TRAVEL

Thirty five minutes north of Auckland (depending on traffic)

KEY FEATURES

- Five holiday homes
- Close to beach and shops
- Large fully fenced section
- One pet friendly home





AUCKLAND CENTRAL

SANDRINGHAM APARTMENTS

An Auckland stay doesn't get easier than this. The holiday homes are located just south of the city centre in Sandringham, giving you easy access to major motorways, including the South-Western from the airport.

Westfield St Lukes shopping centre, Western Springs, Auckland Zoo and the hallowed home of rugby, Eden Park, are all nearby.

And the homes are close to public transport, making them a perfect base for exploring all New Zealand's biggest most cosmopolitan city has to offer.

TRAVEL

Ten minutes to downtown Auckland

KEY FEATURES

- Eight holiday homes
- Close to shops, city centre and public transport



AUCKLAND CITY

CITY RETREAT

The ultimate inner-city break complete with spa, indoor pool, gymnasium and sauna.

Located in the heart of Auckland's trendy Beaumont Quarter, this modern two-bedroom apartment has you within walking distance of the best the city has to offer.

Walk the beautiful Wynyard Wharf area, climb the Auckland Harbour Bridge, visit the Sky Tower and enjoy the vibrant nightlife and many cafes and restaurants nearby.

The possibilities are endless in the big city, and when you've had enough, head home and treat yourself to a soothing sauna or spa.

TRAVEL

Ten minutes walk to downtown Auckland

KEY FEATURES

- One apartment
- Walking distance to city attractions, cafes and restaurants
- Swimming Pool, sauna and spa



MARAETAI BEACH

PET RETREAT

Living up to its name – ‘Meeting place by the sea’ – Maraetai Beach on the Pohutukawa Coast forty minutes southeast of Auckland is the perfect place for a beach break with your pet.

Three kilometres of safe beach, facing Waiheke Island for you all to enjoy and the Omana Regional Park is nearby.

If you're into nature, scenic drives, walks and cycling, this area offers it all. Friendly locals, great fish and chips, divine oysters and a flat white while seated beside the ocean.

TRAVEL

Forty five minutes south-east of Auckland (past Whitford)

KEY FEATURES

- A single pet friendly home
- Close to beach
- Fully fenced section



Waiheke Island, Auckland. Photo: Miles Holden

AUCKLAND EAST

CITY BEACH BREAK

Truly the best of both worlds. Lounging on the beach one minute, and in the hub of the city the next.

The Eastern Beach holiday homes are located in an area of beautiful beaches and scenic walkways with all the city conveniences, shopping centres and attractions close by.

Take a ferry from Half Moon Bay to the city centre, climb a volcano or follow the Fisher Walkway along the banks of the Tamaki River.

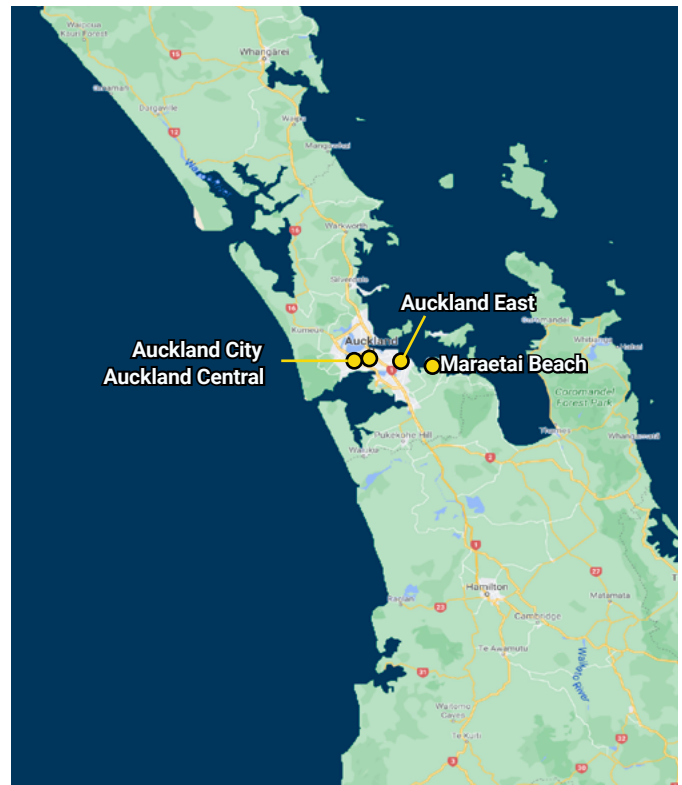
There's a boat ramp and public transport nearby. Take a beach break without leaving the city!

TRAVEL

Thirty minutes from downtown Auckland

KEY FEATURES

- Two holiday homes
- Close to falls, park and licensed restaurant



Half Moon Bay Ferry Terminal

Mobile friendly and easy to use

Marram's all about good health, happy holidays and saving you money.

It's not about stress, anxiety and endless paperwork. On any device, you can:

- Sign up to Marram. Even your Direct Debit form is paperless!
- Submit your healthcare requests - easy peasy!
- Book your next holiday – up to 12 months ahead if you wish, and offering a 100% refund if Covid level changes force you to cancel holiday bookings.

Mobile friendly and easy to use – try it and see.

marram.co.nz





Hot water beach, Coromandel

WHITIANGA

CAPTAIN COOK MANOR

Big game fishing, vibrant shops, cafes and restaurants, make this eastern Coromandel town a very desirable location.

Its deep water harbour is the gateway to beautiful Mercury Bay and the world-class marine recreational activities it offers.

It's just a pleasant scenic drive away from beautiful Cathedral Cove, and fabulous Hot Water Beach with its geothermal pools.

The Marram holiday homes have plenty of parking for boats and there's a boat ramp nearby.

TRAVEL

Two and a half hours north of Auckland

KEY FEATURES

- Four holiday homes
- Close to beach and shops

NGARIMU BAY

HILLTOP RETREAT

On the western side of the Coromandel Peninsula, Ngarimu Bay offers a little of everything. A great place to put your feet up and relax when you're done with swimming and exploring the beautiful beaches, native rain forests and volcanic hills nearby.

Does swimming with dolphins, exploring old gold mines and sampling the locally produced food and wine appeal? Maybe hiking the local heritage trails, taking a scenic flight or visiting the Butterfly Gardens might be options.

There's no shortage of things to do when you take a break in Ngarimu Bay.

TRAVEL

One and a half hours from Auckland
One and a half hours from Hamilton

KEY FEATURES

- A single holiday home with spectacular views



WHANGAMATĀ

Beach Break

Kiwis reckon it's one of the best beaches in Aotearoa New Zealand.

Whangamatā's amazing ocean beach has some of the best surf breaks, yet safest swimming in the country. That's why it's always on the Top 10 list of beaches.

But there's more to this popular aquatic town than its white and golden sand beaches.

It sits alongside the Coromandel Forest Park and offers great walking, hiking, orienteering and bike trails. And if retail therapy's needed, some of the best shopping on the Coromandel is found in Whangamatā.

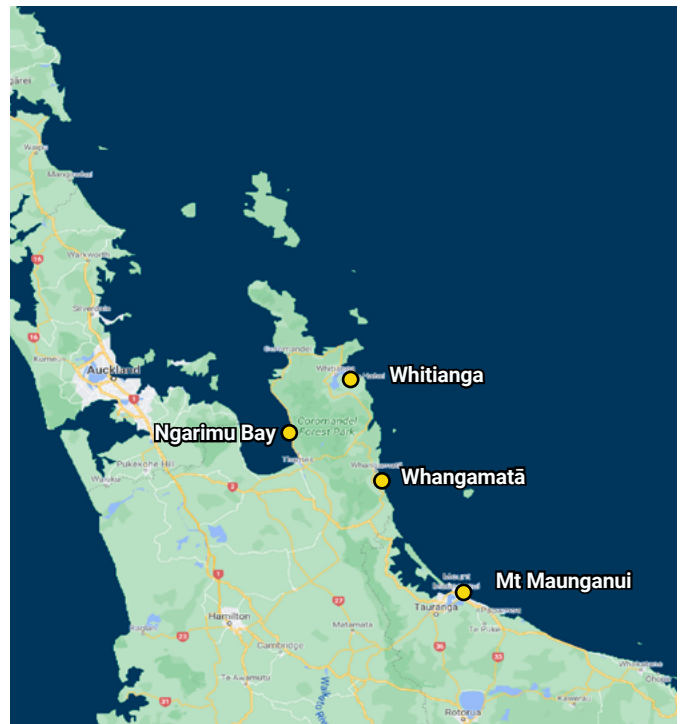
TRAVEL

Two hours from Auckland

One hour fifty minutes from Hamilton

KEY FEATURES

- Two holiday homes
- Close to the beach and local shops



Mt Maunganui: Skyviewphotography - , CC BY-SA 4.0

MOUNT MAUNGANUI

Paradise under the mountain

Kilometres of white sand and surf beaches offering some of the best swimming and surfing in Aotearoa New Zealand.

Standing guard between the harbour and the surf beach just a couple of blocks away, is Mauao, an extinct volcano known locally as the Mount. For the adventurous the area offers plenty.

You can summit Mauao, or do the base walk before taking a break in one of the area's many cafes and restaurants. Or try jetboating, bungy jumping or swimming with Dolphins.

For the more leisurely holidaymaker, a day-trip to Matakana Island, lazing in the saltwater hot pools, or simply enjoying a day on the beach rated best in New Zealand by Tripadvisor.

TRAVEL

Two hours fifty minutes from Auckland

KEY FEATURES

- Fourteen holiday homes in two locations
- Spectacular views from most homes
- Close to beach and shops





Hamilton Gardens. Photo: Camilla Rutherford

HAMILTON RIVER CITY APARTMENTS

A great base to explore a major part of the central North Island. Auckland is one hour forty minutes away and Taupo two hours.

This river city in the heart of the Waikato, offers everything you'd expect to find in a city and more, with lush parks and gardens, museums, a zoo and casino.

From your Hamilton base you also have easy access to many iconic attractions, including the Waitomo Caves, Hobbiton, Raglan's surf coast and the historic Te Aroha mineral pools.

TRAVEL

One hour twenty five minutes from Auckland
Two hours from Taupo

KEY FEATURES

- A single townhouse
- Three bedrooms, two bathrooms
- Internal double garage parking



RAGLAN HILLTOP HOUSE

If a stress-busting break is what you're after then the coastal town of Raglan, 48 kilometres west of Hamilton is just the place.

A laid back community with low-key eclectic shops and friendly cafes, sitting on a beautiful sheltered harbour which is very popular with families.

But if you're not averse to a bit of action, then as well as an internationally acclaimed surf break, Raglan boasts swimming beaches, sky diving, kite boarding, fishing, boating, kayaking, mountain biking, blow karting, paragliding, and horse trekking.

And if you're really adventurous, ask a local to show you The Point, the longest left-hand ride in the world.

TRAVEL

Thirty minutes from Hamilton

KEY FEATURES

- A single holiday home
- Close to beach and town centre
- Sunny rear deck
- Large fenced section



Hobbiton. Photo: Miles Holden



Raglan beach, photo: Paul Abbitt

OH OPE

GATEWAY TO THE SEA

Wake to the sounds of the waves gently lapping on the white sand and go to sleep exhausted after a day enjoying all that this desirable location has to offer.

There's plenty of sun, safe swimming and warm waters along with 11 kilometres of white sand beach stretching from the Ohiwa Harbour to the West End.

For the adventurous, fishing, swimming, sailing, kayaking, windsurfing and jet skiing are all on offer.

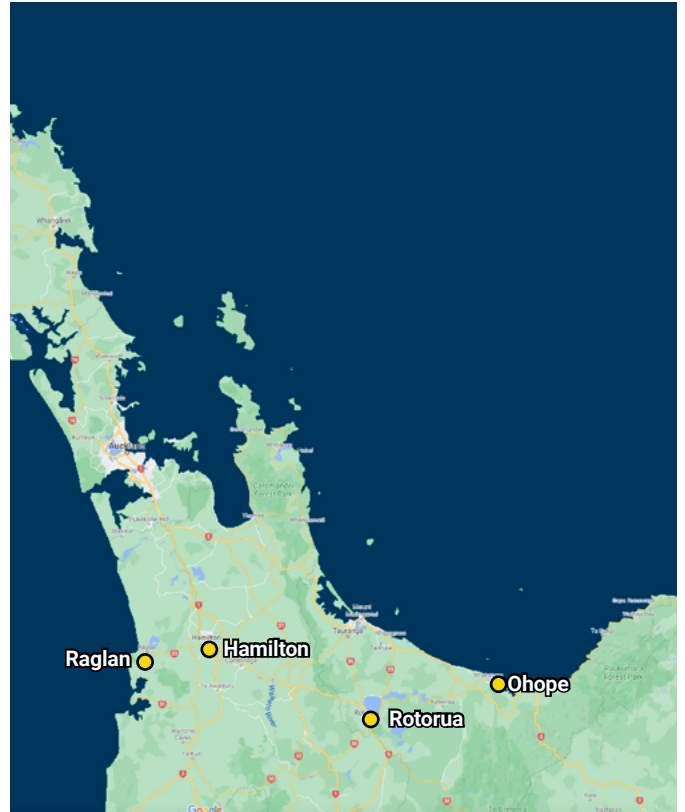
And if communing with nature is what you desire, then Ohiwa Harbour is one of the natural highlights of the region. It's a haven for bird-life with the Godwits migrating every season from Alaska to settle on its shores.

TRAVEL

Three hours fifty minutes from Auckland
One hour twenty minutes from Rotorua

KEY FEATURES

- Six holiday homes in two locations
- Great beach location
- One pet friendly home



ROTORUA

CULTURAL OASIS

The most dynamic geothermal area in the country comes complete with spurting geysers, steaming hot springs, exploding mud pools and sulphur rich air.

And with plenty of adrenaline pumping activities on offer, there's plenty to keep everyone happy in this culturally rich Bay of Plenty city.

Try zip-lining through a 119 year old forest, riding the Luge, rafting down a seven metre waterfall or mountain-biking through the Whakarewarewa Forest.

And there's nowhere better to embrace Māori culture than Rotorua's Whakarewarewa Geothermal Valley at Te Puia.

TRAVEL

Two hours forty five minutes from Auckland
One hour from Taupo

KEY FEATURES

- Eight holiday homes
- Close to city centre



Polynesian Spa, Rotorua.



ACACIA BAY

LAKEVIEW

Seclusion on the north-eastern edge of Lake Taupo. Acacia Bay with its beautiful lake views is just a ten minute scenic drive from Taupo town centre with all the amenities including shops, restaurants, cafes and a boat ramp nearby.

The Acacia Bay homes are perfectly situated for Trout fishing, boating, water sports, swimming and geothermal hot pools.

TRAVEL

Ten minutes to Taupo

KEY FEATURES

- Two holiday homes
- Balconies facing the lake
- Boat parking
- One pet friendly home



TAUPŌ

TAONGA BY THE LAKE

Settled beside Aotearoa New Zealand's biggest lake, Taupo offers plenty.

Great shopping, vibrant cafes and restaurants, all very close to the holiday homes.

Get your heart racing with skydiving, bungy jumping, or jet boating.

Known as the Brown Trout capital of the world, there's great fishing to be had on the lake and plenty of guides and boats available for hire.

There's also plenty of geothermal action. Visit nearby Wairakei thermal power station, Craters of the Moon geothermal park, or Huka Falls and village. Or for a more leisurely activity, play the famous Wairakei Golf Course or soak in the hot pools at De Bretts Spa resort.

TRAVEL

Three and a half hours from Auckland
One hour from Rotorua

KEY FEATURES

- Five holiday homes
- Close to lake shore, cafes and restaurants



TURANGI

BROWN TROUT LODGE

Smack in the middle of the Volcanic Plateau, the small town of Turangi is a great base for exploring the region's hunting, fishing mountain-biking, trekking, white water rafting and kayaking attractions.

It's also just forty minutes from Whakapapa Village on Mt Ruapehu and forty minutes from Taupo.

Sitting on the banks of the Tongariro River at the southern end of Lake Taupo, Turangi is popular with anglers targeting the excellent local trout fisheries.

Also nearby, the National Trout Centre, and Tokaanu Hotpools.

TRAVEL

Forty minutes south of Taupō
Forty minutes to Whakapapa village

KEY FEATURES

- Two holiday homes; close to lake front
- Large fully fenced section
- Boat parking



NEW PLYMOUTH

MOUNTAIN VIEW

In the shadow of stunning Mt Taranaki with access to some stunning surf beaches, this coastal city is the perfect base for exploring heartland Taranaki.

The city of New Plymouth offers beautiful parks and gardens including the famous Pukekura Rhododendron Park housing one of the world's biggest collections of Rhododendrons and other exotic plants. Children are catered for with a Treehouse Trail and rainforest tracks.

There's an eleven kilometre Coastal Walkway described as an absolute 'must do'. The landscape is perfect for tramping, biking, surfing, swimming and fishing.

The city also boasts a burgeoning arts scene which includes the Govett Brewster Art Gallery and Len Lye Centre, hosting world-class exhibitions.

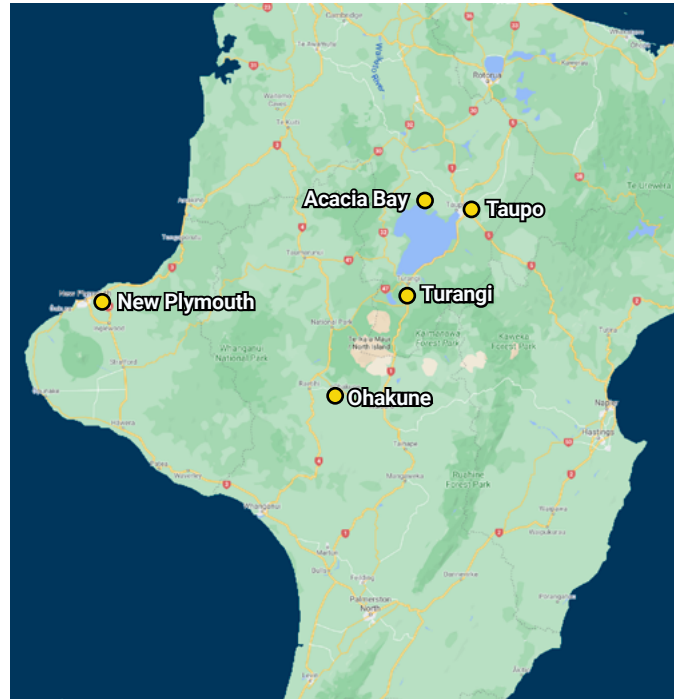
Another reason to head to New Plymouth is WOMAD, the annual three day international music festival.

TRAVEL

Three and a half hours to Taupō

KEY FEATURES

- Two holiday homes
- Close to shops
- One pet friendly home



Tupare garden and homestead designed by Chapman-Taylor. Photo credit: NewZealand.com

OHAKUNE

MOUNTAIN VILLAGE CHALETs

Conveniently located on the slopes of Mt Ruapehu, Ohakune is an all seasons destination.

In the winter its proximity to Turoa and Whakapapa ski fields make it a prime destination for skiers and snowboarders.

In summer people head there to walk the Tongariro Crossing or enjoy family friendly hiking, biking, kayaking and rafting, and nature watching in the Tongariro National Park and surrounding area.

The Waiouru Army Museum is not far away and Taupō is a scenic drive of just under two hours away.

TRAVEL

Thirty minutes to ski field

Three and a half hours from Wellington

One hour forty minutes from Taupō

KEY FEATURES

- Three holiday homes
- Dishwasher, heat pumps and drying room



Ohakune Carrot Adventure Park.



NAPIER

ART DECO BREAK

Aotearoa New Zealand's Art Deco city with its unique architecture is a great place for a break. Right in the heart of wine country, it's packed with quirky cafes, art galleries, boutique shops and fine dining restaurants.

Rebuilt after the 1931 earthquake, the city is known for its art deco landmark buildings and tree lined waterfront promenade. It's been described as "like stepping inside a 1930's filmset."

As well as guided walks of the city, Napier offers beaches, pools, aquariums, gardens, vineyards and wineries.

TRAVEL

Six kilometres to Napier's town centre
 One hour forty five minutes from Taupo
 Four hours from Wellington

KEY FEATURES

- Four holiday homes
- Large fenced section
- Close to the beach



HASTINGS

THE BIG APPLE

Bring your appetite to this central Hawkes Bay town which serves one of Aotearoa New Zealand's major food producing areas.

Just twenty minutes from Napier, Hastings is famous for apples, stone-fruit and great red wine. But there's more than famous vineyards, like Mission, Te Mata and Black Barn to while away your time in Hastings.

Splash Planet is a big draw-card for the kids, you can climb Te Mata Peak, or visit the town's stylish new Opera House or stock up at the weekly farmers market.

A visit to Cape Kidnappers to see the Gannet colony is a highlight not to be missed from September through to April.

TRAVEL

Two hours from Taupo
 Fifteen minutes east of Napier
 Four hours from Wellington

KEY FEATURES

- Three holiday homes
- One pet friendly home



PALMERSTON NORTH

ON THE MIGHTY MANAWATŪ

Despite what you may have heard, there's plenty to do in Palmerston North.

If you like food, drink, art, river-sports and friendly locals then this Manawatu city obliges in bucket-loads.

It has all the sophistication and diversity of a city, while surrounded by an adventure enthusiasts dream.

You can walk the Manawatū Gorge, try horse trekking or try rafting on the Rangitikei River. The New Zealand Rugby Museum is found here, the Te Manawa Museum gallery and science centre is also worth a visit and thrills abound at the local speedway.

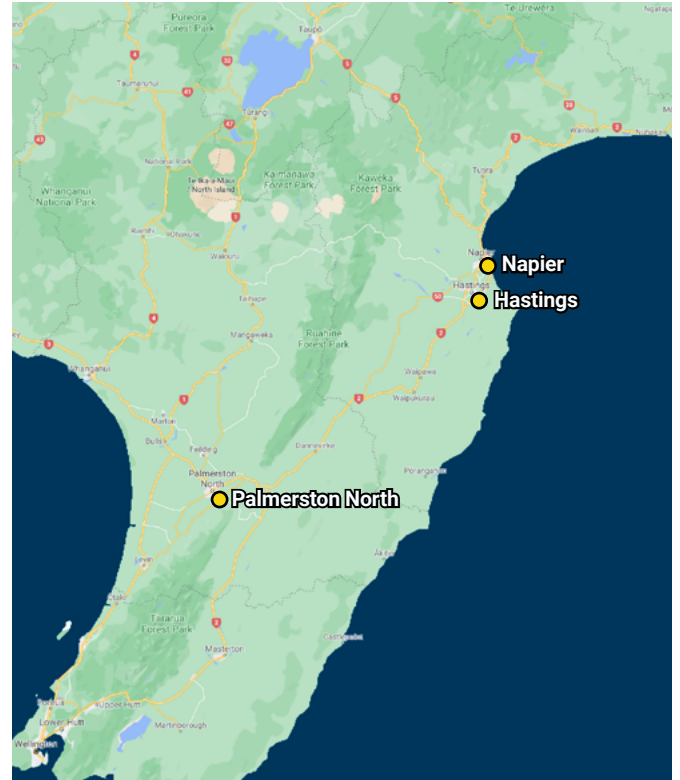
It's a university town with great bookshops, cheap eats and fun bars, and much more.

TRAVEL

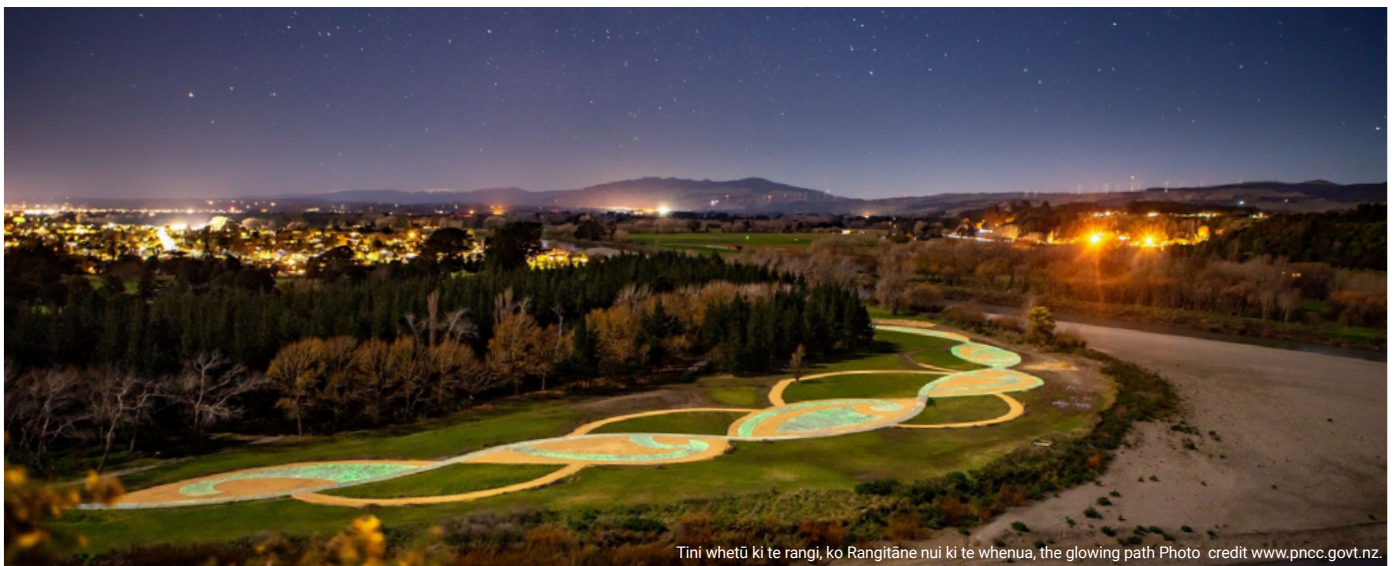
Two hours from Wellington

KEY FEATURES

- Two holiday homes
- Shopping, museums and art galleries
- Farm experiences
- Motor sport events
- Water sport and aquatic entertainment



The Ara Kotahi Bridge. Photo: ManawatuNZ



Tini whetū ki te rangi, ko Rangitāne nui ki te whenua, the glowing path Photo credit www.pncc.govt.nz.



GREYTOWN

HEART OF THE WAIRARAPA

They call it the prettiest town in Aotearoa New Zealand, but there's more than just a pretty country town with beautifully restored cottages and tree-lined streets to lure you to Greytown.

High-end shopping, fabulous eateries serving up local wine and produce, a famous chocolatier and a Cobblestone Museum can be added to the mix.

When you've had enough of that, then the surrounding countryside is well worth exploring. Take a scenic drive to Castlepoint or Palliser for swimming or fishing, or check out the Putangirua Pinnacles scenic reserve. All this just an easy hour's drive from Wellington.

TRAVEL

One hour ten minutes from Wellington
 One hour thirty five minutes from Palmerston North

KEY FEATURES

- A modern home
- Walking distance to shops, park and restaurants
- Garaged parking



MARTINBOROUGH

WINE COUNTRY RETREAT

An attractive colonial town right in the heart of Wairarapa wine country.

Step out the door and more than thirty of Aotearoa New Zealand's top wineries will be just a short walk or cycle ride away.

There's great shopping to be done as you explore the main shopping street and any number of great cafes and restaurants to eat in.

Check out the Martinborough Hotel which sits on the corner of the square and sip a local wine on the deck while watching the world go by. Over the road the Wine Centre is a great source of information, tastings and banter about the local wine scene. Tastings are also offered at many of the local vineyards.

When you've had enough of that, head out to the seal colony at Cape Palliser, or go hiking in the Putangirua Pinnacles scenic reserve.

TRAVEL

One hour fifteen minutes from Wellington

KEY FEATURES

- Two modern homes
- Walking distance to shops, restaurants and wineries



KĀPITI COAST

NATURE COAST RETREAT

The perfect spot for a relaxing holiday just forty five minutes north of Wellington.

The jewel in the crown here is Kāpiti Island, home to some of our rarest birds. Plan well ahead to book a trip to the Island sanctuary, which you'll never forget.

Kāpiti Coast beaches, sheltered by the Island, offer safe swimming and great boating and fishing opportunities.

Kāpiti has one of the few true Links golf courses in the world so bring the clubs. A new indoor Aquatic centre will keeps the kids happy when it rains or a visit to Southwards Car Museum. There's also the steam and tram museums in nearby Paekākāriki.

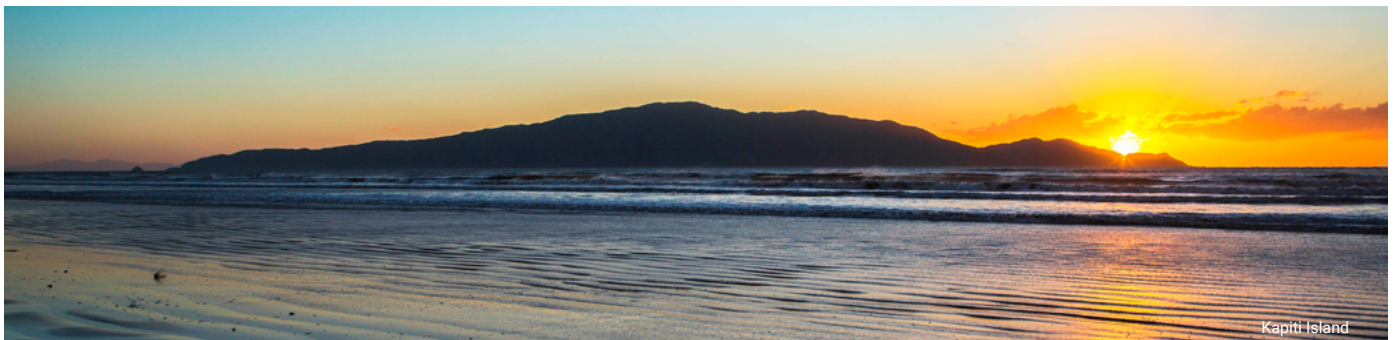
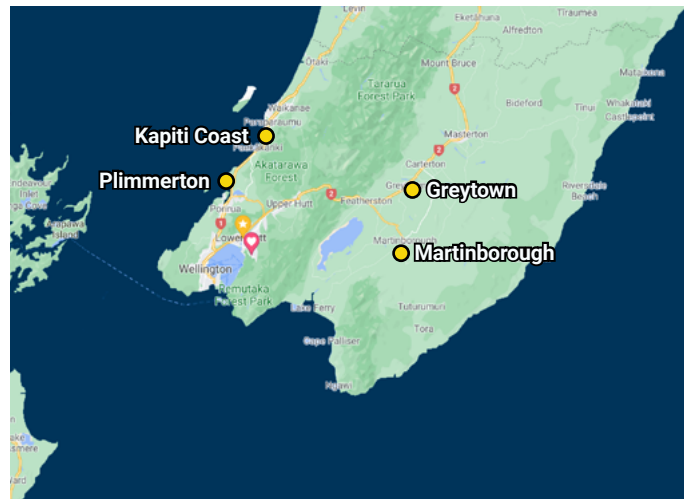
For the really adventurous, walking the recently opened Stairway to Heaven Escarpment Track is a challenge people are raving about.

TRAVEL

Forty five (traffic dependent) north of Wellington

KEY FEATURES

- Three holiday homes
- Close to beach, parks, playground and Raumati Beach village
- Close to public transport
- One pet friendly home



PLIMMERTON

SUNSET HIDEAWAY

Conveniently located midway between Wellington and the picturesque Kāpiti Coast, Plimmerton offers access to the activities and attractions offered in both regions.

This quiet, relaxed seaside town affords views of Mana Island, the South Island on a clear day, and the most stunning sunsets. It's definitely the place for a slice of the quiet life if that's what you're after, but with many options to explore further if the mood takes you.

Locally, the beach offers safe swimming, rock pools, boating and windsurfing.

And you won't even need to use the car. There's a regular train service to Wellington and the Kapiti Coast.

TRAVEL

Twenty five minutes from Wellington

KEY FEATURES

- A single holiday home with private deck
- Walking distance to shops, beach, cafes and train





WELLINGTON CITY INNER-CITY HIDEAWAY

Big city excitement right on your doorstep.

Step outside these modern city apartments and cross the road to stock up at the famous Moore Wilson's fresh food store, or take the first coffee of the day at any number of local cafes, before venturing into the Entertainment Quarter just a couple of blocks away.

A ten minute walk, or jumping on a bus, will get you to the Golden Mile shopping area further downtown.

Theatres, bars, restaurants, concerts and Wellington's iconic Cuba Mall are all an easy walk from these apartments.

Take the ferry and visit Matiu/Somes Island, or Eastbourne, visit the Wellington Zoo, Botanical Gardens, Weta Workshops, take the Cable Car, or spend a day at Wellington's pride and joy, Te Papa.

TRAVEL

Five minutes walk to central city

KEY FEATURES

- Nine modern apartments
- Covered off street parking
- Minutes walk from cafes, Te Papa and waterfront



WELLINGTON SOUTH COASTAL RETREAT

All the excitement of the city and access to a great surf beach and Wellington's wild South Coast. Wellington South at Lyall Bay, across the road from the famous Maranui Surf Club is the ideal location for a Wellington break.

Bring the surf or boogie boards, cross the road and you're in the surf. Put on your walking shoes and go exploring the rugged South Coast walkways. Watch the Cook Strait ferries, or incoming flights do battle with the famous Wellington winds.

If the weather turns, grab a bus and head into town to enjoy all Wellington city has to offer.

TRAVEL

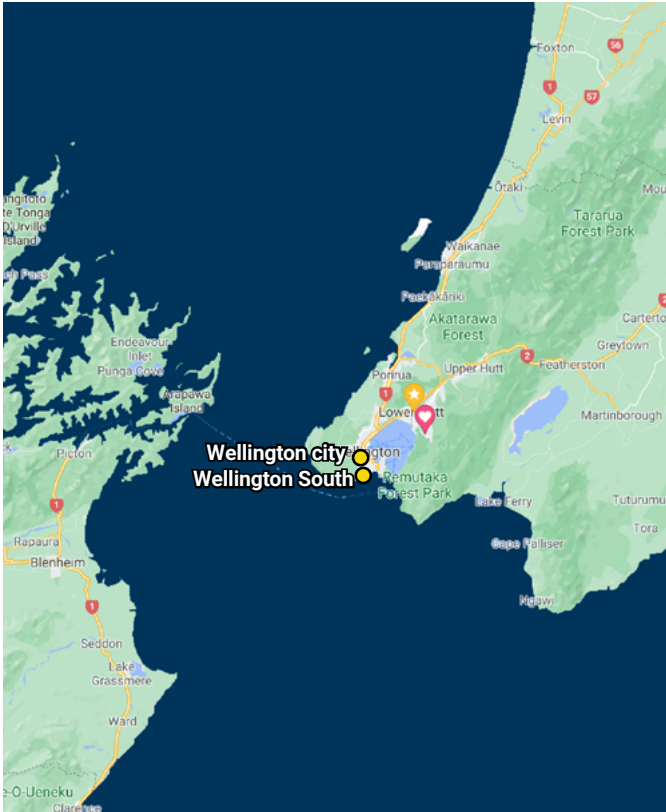
Fifteen minutes drive from Wellington City
Close to Airport

KEY FEATURES

- Two modern homes
- Close to beach, shops and public transport
- One pet friendly home



Lyall Bay beach, South Wellington



Cuba Street, Wellington. Photo: Celeste Fontein



Not just fabulous holiday homes but genuine healthcare benefits as well

How highly do you rate:

- saving money;
- good health; and
- great family holidays?

With Marram you can achieve all three.

Marram Community Trust is a non-profit organisation, providing healthcare and holiday benefits to employees of more than affiliated organisations.

www.marram.co.nz/about/affiliated-organisations

As an employee of one of these organisations you save money AND get access to healthcare and holiday benefits, simply by contributing a small amount weekly, fortnightly or monthly.

There are many good reasons to add Marram to your mix:

- more than 150 high value, low price holiday homes in top locations;
- healthcare benefits that include your partner and children for free;
- pre-existing conditions included;
- healthcare benefits that work alongside your Southern Cross policy;
- annual healthcare benefits of \$6,400 annually for you and your family;
- a \$50 birthday voucher to spend on your next Marram holiday every year;
- the ability to book homes 12 months in advance;
- and if you leave your employer, and you qualify, you get lifetime use of Marram holiday homes.

So save money, stay on top of healthcare and create great holiday memories.





CONTENTS

SOUTH ISLAND

Picton	24
Nelson	24
Kaiteriteri	25
Hokitika	25
Kaikōura	26
Hanmer Springs	26
Christchurch	27
Akaroa	27
Lake Takapo	28
Dunedin - St Kilda	28
Dunedin Westgate	29
Wanakā	29
Cromwell	30
Queenstown	30
Queenstown East	31
Alexandra	31





PICTON

TOP OF THE SOUTH

Nestled at the head of Queen Charlotte Sound at the top of the South Island, this busy little port supports the ferry trade between the North and South Islands and is a perfect gateway to the beautiful Marlborough Sounds.

There's convenient water access to Queen Charlotte Sound and the many secluded islands, bays and beaches contained within.

It's a perfect midway point to relax and take a break before heading further north or south.

There's plenty to do in Picton with wildlife and dolphin tours, kayaking and scenic boat tours and walking and hiking tracks.

You can take a fishing charter or drive the beautiful scenic route between Picton and Havelock.

TRAVEL

Ten minutes walk to town

KEY FEATURES

- Two holiday homes
- Close to town



NELSON

BEACH ON THE BAY

According to the locals all the best bits of Aotearoa New Zealand are found in the one destination, Nelson.

It's no surprise the birthplace of the World of Wearable Arts has a vibrant arts and culture scene, but it's also famous for its stunning natural landscape and beaches, lakes and rivers.

There's something for everyone with several lakes including the world's clearest lake, Rotomairewhenua or Blue Lake, two National Parks, Kahurangi and Abel Tasman, several beaches and an Island.

As you'd expect with a playground like this - climbing, kayaking, whitewater rafting, biking, tramping, boating, fishing and scenic touring are all on offer.

TRAVEL

Ten minutes to city centre

One and a half hours from Picton

KEY FEATURES

- Seven holiday homes
- Close to beach and playground



Cycle trail, Nelson region, photo: Dean McKenzie

KAITERITERI

GOLDEN SANDS

The Kaiteriteri Recreation Reserve is described as Aotearoa New Zealand's ultimate coastal recreation destination.

Famous for its golden sand, emerald green water and excellent facilities, Kaiteriteri is the gateway to the world acclaimed Abel Tasman National Park.

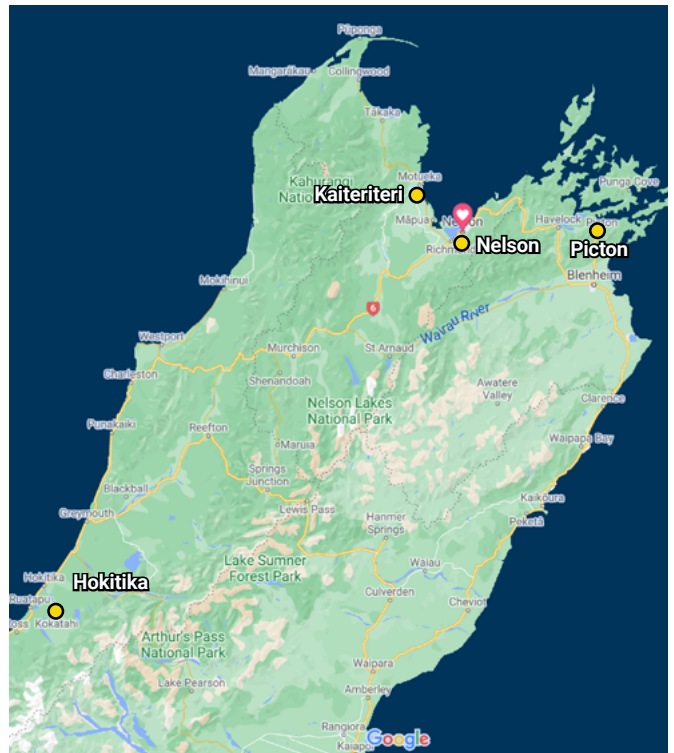
Relax on the beach in the sun or take advantage of the hikes, fishing, sailing and sea kayaking available in the area. Or explore the coastal paths, lime cliffs and many beaches along the way on the Abel Tasman Great Walk.

TRAVEL

Fifty minutes drive north-west of Nelson

KEY FEATURES

- Two holiday homes
- Close to the beach and playground



Kayaking Able Tasman Bark Bay, photo: Marahau Sea Kayaks

HOKITIKA

POUNAMU LODGE

A great base to explore the wild West Coast of our beautiful country.

Built on the back of a gold-rush and famous for its Pounamu – greenstone, whitebait and coal mining history, Hokitika is a nod to days long gone.

It's sparsely populated and its wild and remote scenery make it a great place to visit.

What to do in Hokitika? Walk the Hokitika Gorge, visit the National Kiwi Centre, visit the stunningly beautiful Lake Kaniere Scenic reserve, do the West Coast treetop walk or check out the Hokitika Museum. The Franz Josef and Fox Glaciers are just a scenic drive away, and if you're there in May don't miss the very popular Hokitika Wild food festival.

TRAVEL

Thirty minutes from Greymouth

Three hours ten minutes from Christchurch

KEY FEATURES

- Two holiday homes
- Close to the beach and the Domain
- One pet friendly home





KAIKŌURA ON THE WHALE PATH

From the mountains to the sea this picturesque coastal settlement has it all. The rugged landscape supports a major tourism and wildlife industry.

Nestled in the shadow of the Kaikōura Ranges and Mt Fyfe this small settlement is where you will see some of the country's biggest seal colonies, witness whale migration and find opportunities to swim with dolphins.

If that's not enough there are wildlife tours, Llama trekking, hiking, climbing and winter skiing at Mt Fyfe. Halfway between Picton and Christchurch it's a great place NOT to miss.

TRAVEL

Two hours south of Picton

Two hours twenty minutes north of Christchurch

KEY FEATURES

- Two holiday homes
- Close to the beach, playground
- One pet friendly home



HANMER SPRINGS ALPINE COTTAGE

This secluded alpine village is a real treat if you fancy soaking in geothermal hotpools or a mineral spa in the middle of a forest surrounded by mountains.

It really is the ultimate place to unwind. But if a little more adventure is on your list, Hanmer delivers on that too.

Walk or bike the forest trails, hit the ski slopes or try jet boating and whitewater rafting in the nearby Waiau Gorge. There's bungee jumping, horse trekking, salmon and trout fishing and golf. The hot pools will be there to soothe the bumps and bruises when you return.

TRAVEL

Three hours forty five minutes south of Picton

One hour forty five minutes north of Christchurch

KEY FEATURES

- Four holiday homes in two locations
- Close to the hot pools
- One pet friendly home



CHRISTCHURCH

GARDEN CITY VILLAS

Christchurch is perhaps the newest city in the world.

Following the devastating earthquakes in 2011 the city's been rebuilt as a more creative and funky urban centre. Colourful murals along the city streets tell the story of how this most English of cities, rose from the rubble to reinvent itself as a revitalised mix of old and new.

You can still punt down the Avon River and stroll through the beautiful Botanical Gardens and take tea at the Mona Vale Homestead, but for a more edgy experience check out the city's new BOXed quarter full of trendy cafes, bars and quirky shopping.

Take a tram ride through the city centre, visit the beautifully restored Arts Centre or nearby Antarctic Centre.

The city boasts two wildlife parks and a gondola. Ride the gondola to the summit of Mt Cavendish too and check out the spectacular views of the city, Southern Alps and Canterbury Plains.

There's plenty to do in the South Island's biggest and newest city.

TRAVEL

Ten to fifteen minutes from the central city

Four hours thirty minutes to Dunedin

KEY FEATURES

- Four holiday homes
- Close to Riccarton local shops



Photos: ChristchurchNZ

AKAROA

LA VIE BELLE

A little taste of France in the southern hemisphere. Complete with French street names and architecture, this former French settlement, an hour from Christchurch, has lost none of its provincial seaside charm.

There's dolphins, seals and penguins to be found around the harbour waters surrounding the town. You can even swim with Hector dolphins and chance a sighting of the magnificent White Albatross.

There's biking and hiking trails to suit everyone and lots of French stuff, bien sur.

It breathes French culture from the architecture, shops and cuisine. This is one quaint little village you shouldn't miss.

TRAVEL

One hour twenty minutes from Christchurch

KEY FEATURES

- Two holiday homes
- Harbour views
- Close to waterfront, shops and playground
- Large fully fenced section



Swimming with dolphins at Akaroa, photos Blackcat cruises.



LAKE TEKAPO

BLUE LAKE HOUSE

Bracing mountain air, glacial turquoise water and breath-taking views abound in this lakeside settlement.

There's plenty on offer here in the heart of the MacKenzie country, just a short distance from Aorangi Mt Cook. Like taking a scenic flight over Aorangi Mt Cook and the Westland National Parks or stargazing on the summit of Mt John.

There's alpine and sub-alpine trekking and four-wheel driving in the high country, or for the less adventurous, a round of golf at the historic Mt John Station or a soak in the Tekapo Hot Springs. In the winter, Tekapo is the place to head for both downhill and cross country skiing.

TRAVEL

Two hours forty five minutes Christchurch

KEY FEATURES

- Two holiday homes
- Balconies with great views
- Close to the lake



DUNEDIN - ST KILDA

MARRAM ON ST KILDA

This southern city claims you can see "the world in Dunedin" – and it seems the claim isn't that far fetched. From castles and pyramids to wildlife, beaches, street art and great food, this city delivers.

It's a university city proud of its Scottish and Māori heritage, Victorian and Edwardian architecture and student population.

Hiking and cycling trails crisscross the dramatic rugged Otago Peninsula which is also home to albatross colonies, rare yellow-eyed penguins and sea lions.

The coastal city offers easy access to many beaches, the most popular being St Kilda and St Clair with their white sand, great swimming, surfing and seaside cafes.

Make sure you visit Larnach Castle for a peak inside a bygone era and check out the art galleries, museums and heritage tours while visiting. And also if the time is right you may even be able to cross the stunning Aurora Australis or Southern Lights off the bucket list.

TRAVEL

Ten minutes from the central city

Four and a half hours to Christchurch

Three and a half hours to Queenstown

KEY FEATURES

- Two holiday homes
- Close to Saint Kilda Beach and playground
- Fully fenced sections
- One pet friendly home



St Clair Beach, Middle Beach and St Kilda Beach, Photo: seethesouthisland.com

DUNEDIN WESTGATE

RUGBY CITY BREAK

One of Marram's newest homes puts you within cooeee of everything Dunedin has to offer (see Dunedin St Kilda), and just five minutes from the white sands of St Clair beach.

But did you know Dunedin also boasts the world's steepest street, Baldwin Street.

Or that it's often referred to as Rugby City because of the infectious carnival atmosphere that takes hold every time there's a major rugby match in town.

Westgate offers two, three bedroom single level homes with a studio unit attached to one of the three bedroom homes.

The studio unit has a shared entrance and garage but private outdoor living. Open plan, sun drenched and ideal for two. If you are wanting to bring extended family or friends but want your own space, book both by phoning the Marram team on 04 801 2920.

TRAVEL

Ten minutes central city
Four and a half hours to Christchurch
Three and a half hours to Queenstown

KEY FEATURES

- Two, three-bedroomed homes
- Studio unit
- The three-bedroomed unit with studio can be booked separately or as one
- Unlimited WiFi
- Walking distance to golf course
- Fenced sections



WANAKĀ

LAKEVIEW LODGE

Boaties rate Wanakā as one of their favourite destinations.

Maybe because the lakefront is just metres from the holiday home's door and they have one of Aotearoa's largest lakes at their disposal.

But Wanakā is about a lot more than water sports. Mt Aspiring National Park is nearby offering stunning scenery, rock climbing, alpine kayaking or a fast-water canyoning adventure.

There's a selection of great skifields in the vicinity, Treble Cone, Cardrona, Harris Mountain and Pisa Range, and plenty of skiing and snowboarding in the winter.

TRAVEL

Forty minutes north of Cromwell
One hour north of Queenstown

KEY FEATURES

- Five holiday homes
- Close to city centre



Artist impression, Wanaka



CROMWELL

GOLDRUSH VILLAS

You can recreate the heady days of the Otago goldrush in this relatively modern town.

Cromwell promises a unique blend of nostalgia, set against a backdrop of large-scale hydro engineering. The town was built when the Clyde Dam flooded the original Cromwell Village.

It's a great base from which to explore the beautiful Central Otago region. Visit the historic Bannockburn Village, or the National Motorsport Museum.

Grab your bike, jump on a helicopter and then ride down the stunning Central Otago Ranges.

Explore nearby ghost towns and soak up the scenic views from Lake Dunstan.

And if the season is right, head to the nearby skifields for a spot of snowboarding and skiing, or head to the orchards to taste some of the best apricots in the world.

TRAVEL

Thirty minutes west of Alexandra
 Fifty minutes east of Queenstown
 Two hours forty five minutes to Dunedin

KEY FEATURES

- Two holiday homes
- Close to shops
- One pet friendly home



QUEENSTOWN

ADVENTURE CENTRAL

A bucket list destination for thrill seekers and adrenalin junkies, nestled in the middle of a scenic landscape worthy of Hollywood or the very least an Instagram post.

The selfie capital of Aotearoa New Zealand is a great place to holiday, offering something for every season.

In the cooler months it's a world class ski resort, but no matter the season there's always plenty to do, including jetboating on the Kawarau River, bungy jumping, skydiving, kayaking and white water rafting.

There's also golf, wine tours, hiking and biking, gondolas and lake cruising. And if you have any energy left after all of that there's shopping, bars and spas, cafes, fine dining and a vibrant nightlife.

TRAVEL

Fifty minutes to Cromwell
 Three and a half to four hours to Dunedin

KEY FEATURES

- Twenty modern apartments
- Under development



Artist impression, Queenstown

QUEENSTOWN EAST

REMARKABLE VILLAS

Conveniently located on the doorstep of the Remarkables and Cardrona Skifields, this holiday home has you close enough to enjoy some of the best skiing on offer, but there's also no shortage of things to do in the warmer months either.

Scenic helicopter rides, a trip on the Earnslaw around Lake Wakatipu or a short drive to the quaint goldrush township of Arrowtown.

Ride the Luge or take the gondola and enjoy breathtaking vistas. Go fishing or take a hike.

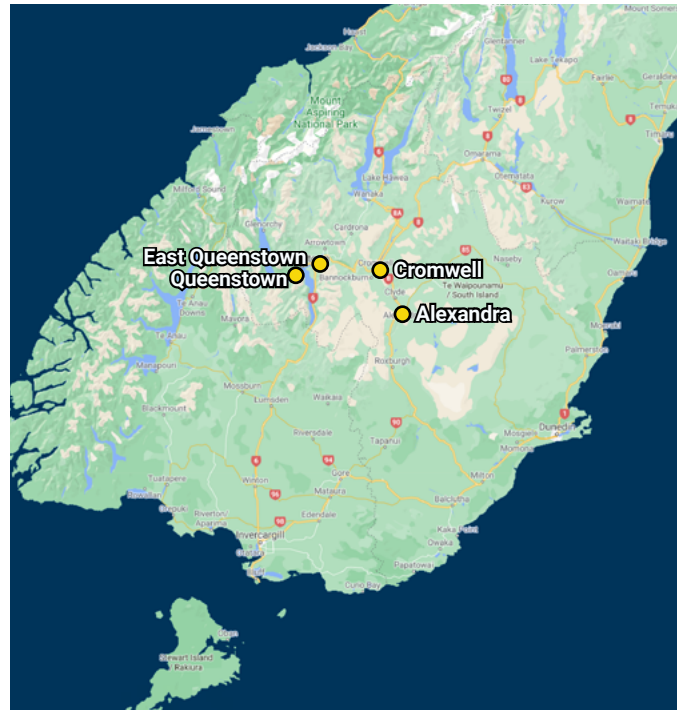
Or simply head 8kms into central Queenstown and enjoy the shopping, bars and eateries you'll find there.

TRAVEL

Eight kilometres east of Queenstown central
Three and a half hours to Dunedin

KEY FEATURES

- Eight holiday homes
- Great views of the slopes
- Close to shops and airport



ALEXANDRA

CENTRAL HEART

It's like stepping into a Graham Sydney painting.

Hot summers, fairytale frosts and stark arid landscapes all add to Alexandra's appeal.

If you want to escape the rat race then you'll find Alexandra particularly appealing.

It's Pinot Noir central for one thing. It's an ideal base for tackling the internationally acclaimed Otago Rail Trail.

There are skifields nearby, jet-boating on the Clutha River, hot air ballooning and ice sports.

Its rustic, raw, quiet and peaceful. A first class destination without all the fuss and expense.

TRAVEL

Two hours twenty minutes west of Dunedin
One hour fifteen minutes to Queenstown

KEY FEATURES

- Two holiday homes
- Quiet location





MARRAM COMMUNITY TRUST



Marram Community Trust
PO Box 24006, Wellington 6142, New Zealand

ph: 04 801 2920 | fax: 04 385 3558 | support@marram.co.nz | www.marram.co.nz



[instagram.com/marram_community_trust_nz](https://www.instagram.com/marram_community_trust_nz)



[facebook.com/MarramCommunityTrust](https://www.facebook.com/MarramCommunityTrust)